

**FIMER**



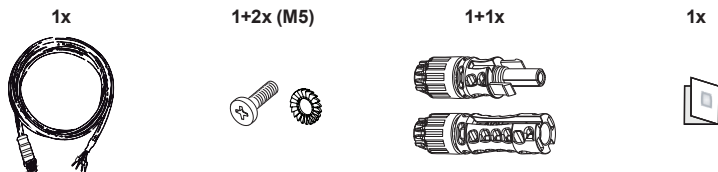
# **PowerX**

## **Wiring Kit**

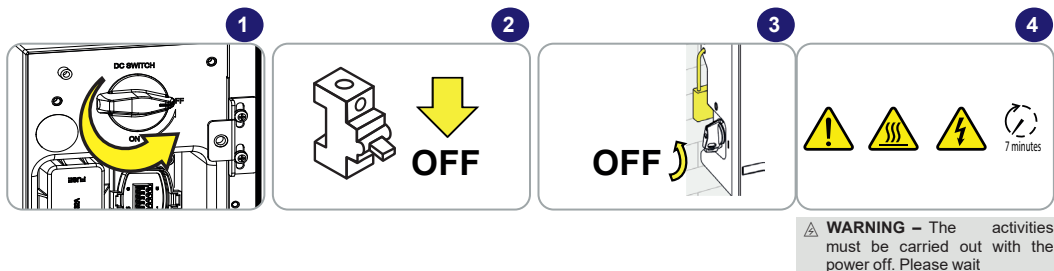
# Quick Installation Guide

In addition to what is explained in this quick installation guide, the safety and installation information provided in the product manual must be read and followed. The technical documentation for the product is available at the website.  
The device must be used in the manner described in the manual. If this is not the case the safety devices guaranteed by the inverter might be ineffective.

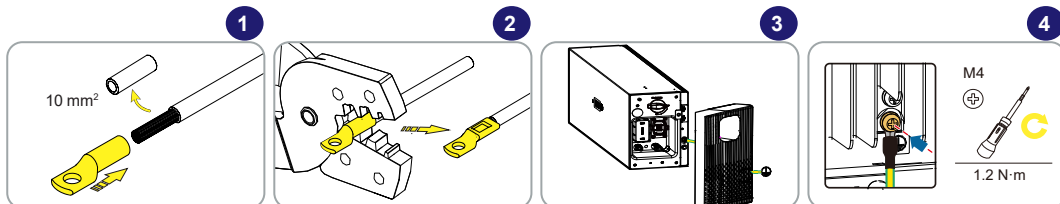
# List of supplied components



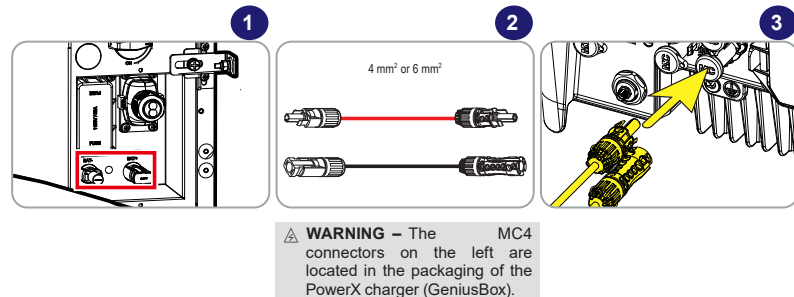
## 1. Powering OFF the system

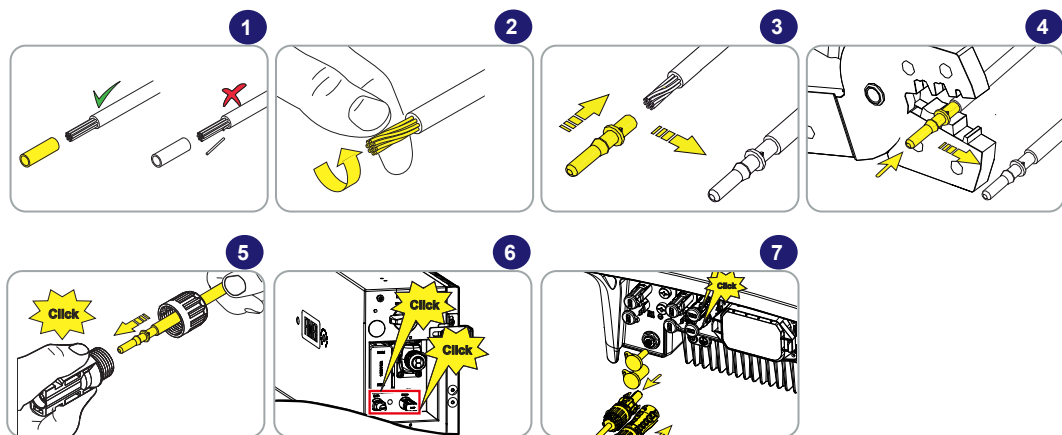


## 2. Protective earthing (PE) connection

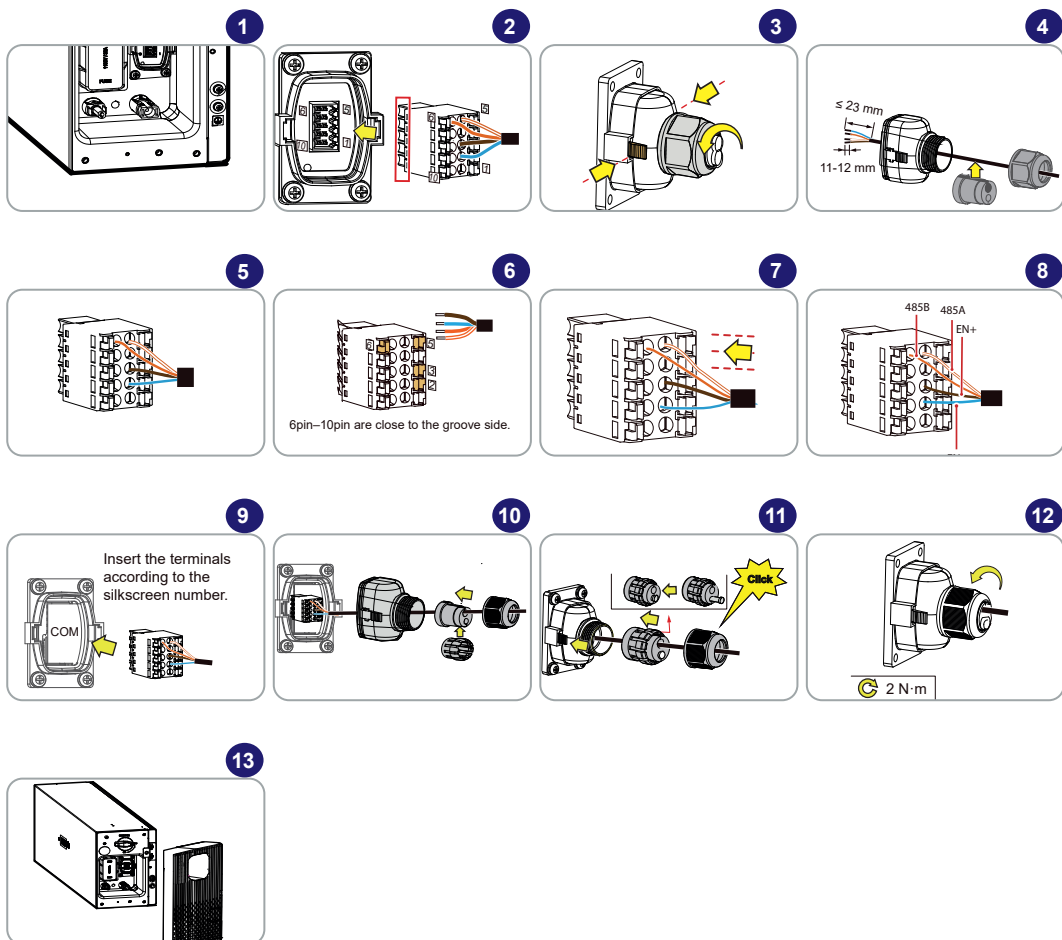


## 3. Installing DC Input Power cables

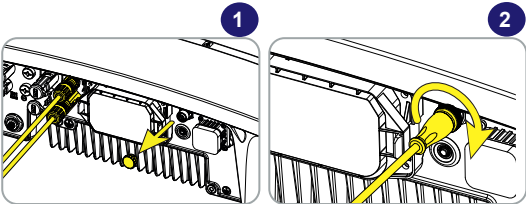




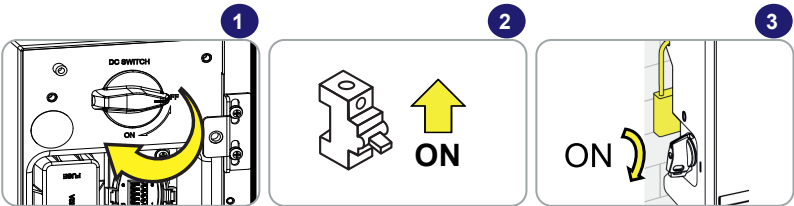
## 4. Installing BMS cable on PowerX



## 5. Installing BMS cable on PowerUNO and PowerTRIO



## 6. Powering ON



**NOTE** – First turn ON the battery, and then the inverter side (DC SWITCH + AC GRID)

## 7. BMS Cable pinout

PowerX Side	Wire	PowerUNO or PowerTRIO side
PIN 5 (485A)	White-Orange	485_SCOM-P-ISO
PIN 6 (485B)	Orange	485_SCOM-P-ISO
PIN 2 (ENABLE -)	Blue	GRS
PIN 3 (ENABLE +)	Brown	+12V_SELV_CH

