

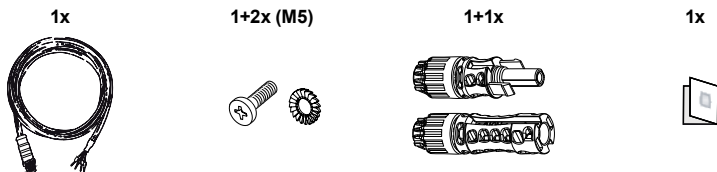


# **PowerX**

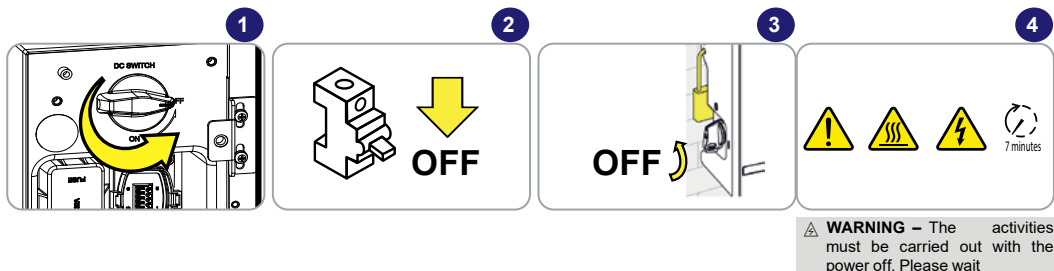
## **Wiring Kit**

### **Quick Installation Guide**

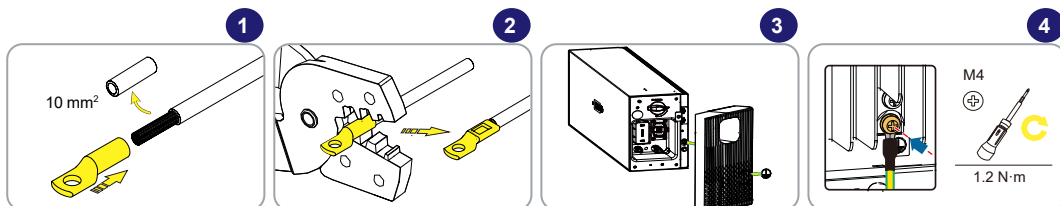
# List of supplied components



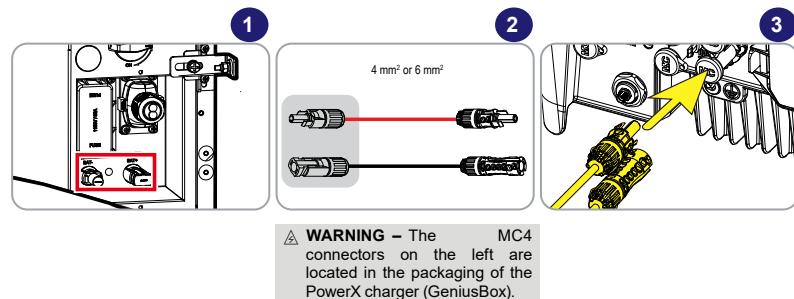
## 1. Powering OFF the system

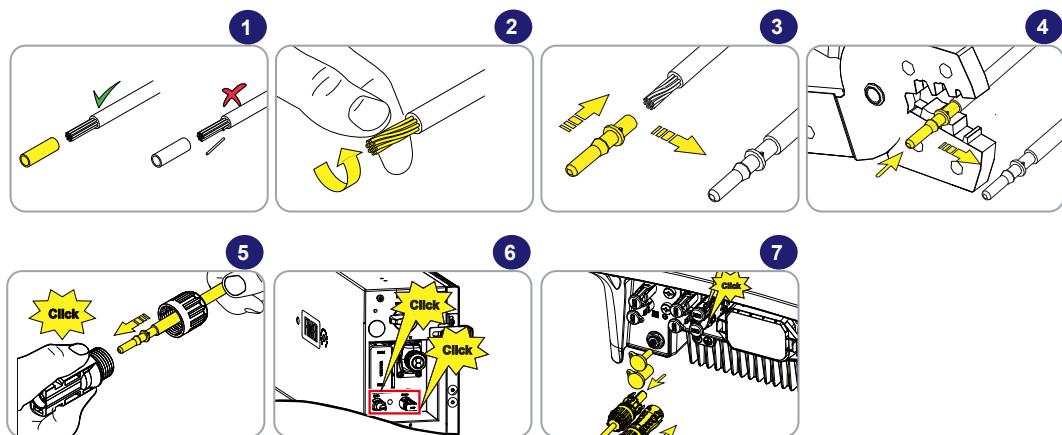


## 2. Protective earthing (PE) connection

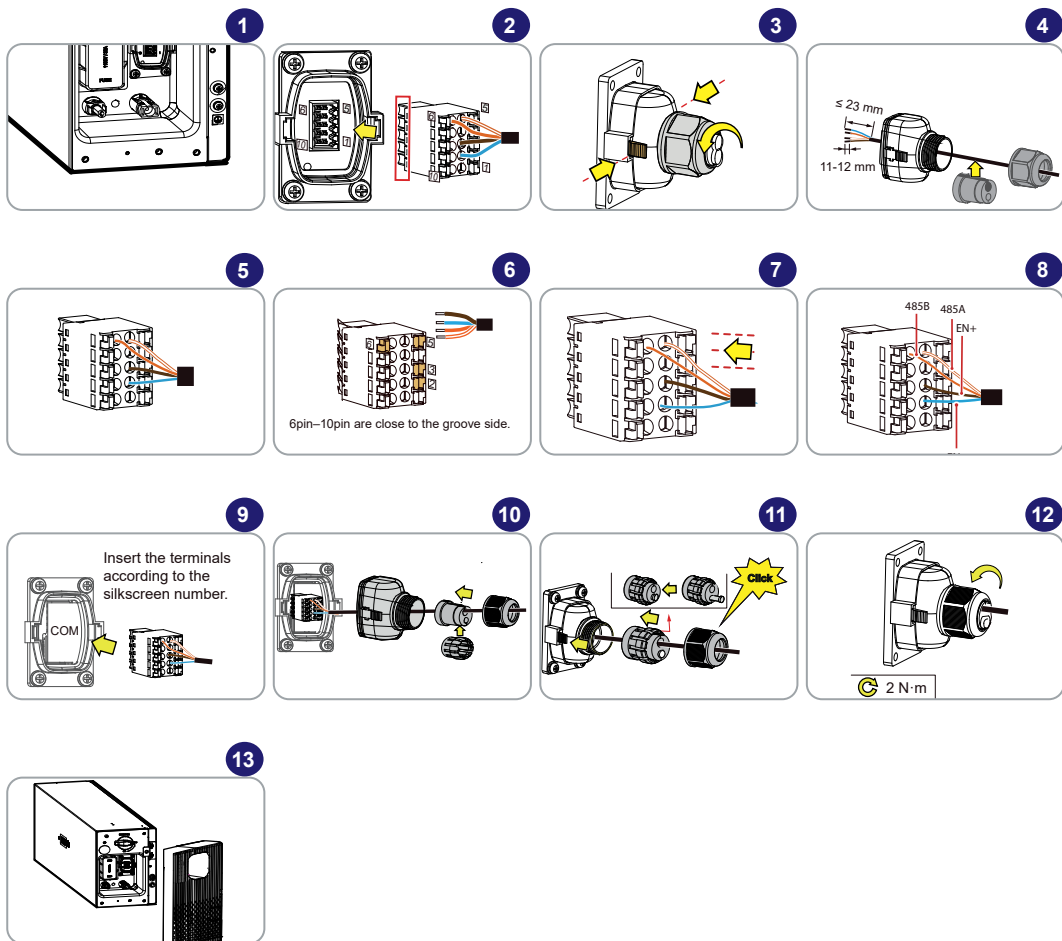


## 3. Installing DC Input Power cables

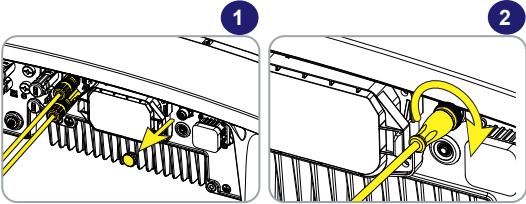




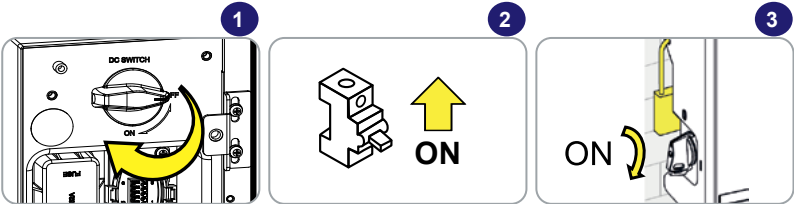
## 4. Installing BMS cable on PowerX



## 5. Installing BMS cable on PowerUNO and PowerTRIO



## 6. Powering ON



**NOTE** – First turn ON the battery, and then the inverter side (DC SWITCH + AC GRID)

## 7. BMS Cable pinout

PowerX Side	Wire	PowerUNO or PowerTRIO side
PIN 5 (485A)	White-Orange	485_SCOM-P-ISO
PIN 6 (485B)	Orange	485_SCOM-P-ISO
PIN 2 (ENABLE -)	Blue	GRS
PIN 3 (ENABLE +)	Brown	+12V_SELV_CH



For more information  
please contact your  
local FIMER  
representative or visit:

fimer.com

FIMER\_Wiring-KIT-PowerUNO-PowerTRIO\_Quick Installation Guide\_EN\_RevB

We reserve the right to make technical changes or modify the contents of this document without prior notice. With regard to purchase orders, the agreed particulars shall prevail. FIMER does not accept any responsibility whatsoever for potential errors or possible lack of information in this document.

We reserve all rights in this document and in the subject matter and illustrations contained therein. Any reproduction, disclosure to third parties or utilization of its contents – in whole or in parts – is forbidden without prior written consent of FIMER. Copyright© 2024 FIMER. All rights reserved.