



SREA-50 firmware update

Handled by

Vassili Jung

Date

18.04.2012

Pages

1 (21)

Overview

SREA-50 firmware and kernel can be updated by using local Ethernet connection (preferred) or point-to-point EIA-232 cable to SREA-50.

Note! Firmware and kernel update will reset the SREA-50 configuration to default. Backup of the SREA-50 configuration is not compatible to newer firmware version.

Update adapter's kernel first before firmware file.

Firmware file is delivered and compatible only with dedicated kernel.

ABB Oy

Postal Address:

Drives

P.O.Box 184

FIN-00381 Helsinki, Finland

Street Address:

Drives

Hiomotie 13

FIN-00380 Helsinki, Finland

Telephone:

+358 10 2211

Telefax:

+358 10 22 xxxxx

Internet:

www.abb.fi

e-mail:

first name.last name

@fi.abb.com

Business Identity Code:

0763403-0

Domicile: Helsinki

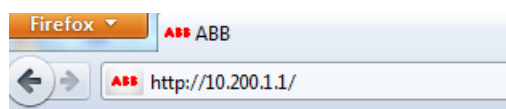
Instructions for kernel update over local Ethernet

Step 1

Connect SREA-50 Ethernet adapter to a same local Ethernet with PC. Make sure that you are able to ping SREA-50 adapter from your PC. It is possible to use cross-over Ethernet cable, which comes with the SREA-50 kit.

Point-to-point Ethernet connection with PC and SREA-50 is recommended for firmware update.

Note! Please observe the default IP address of SREA-50 **10.200.1.1**. Firmware update may restore factory default settings to the adapter.



Step 2

If this is the first start of SREA-50, that is not configured, please read chapter “Configuring SREA-50” of “Quick installation and start-up guide SREA-50 remote monitoring adapter” (Document 3AUA0000098876 REV A).

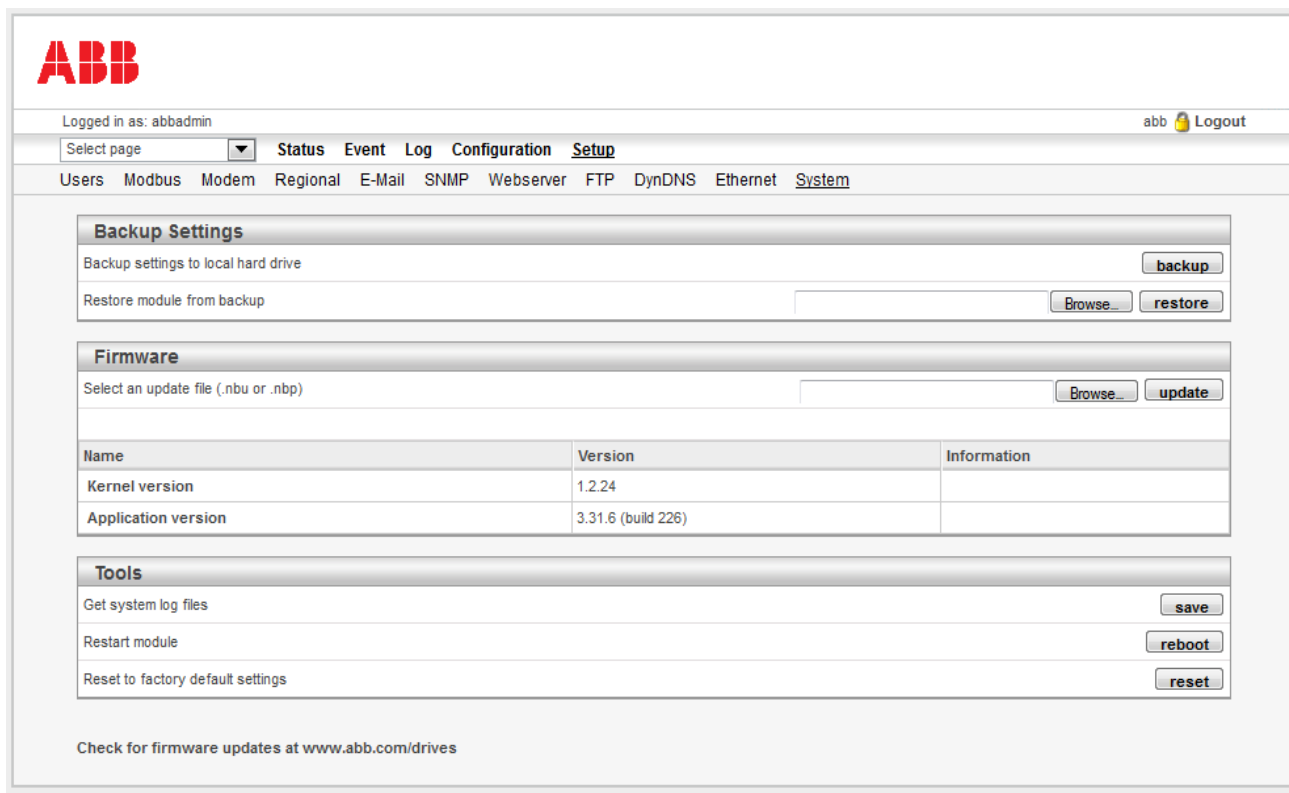


If SREA-50 was previously configured, sign in to SREA-50 adapter with super admin rights and select **Setup** page, then **System**.



Step 3

Open new kernel or firmware file upload dialog by “Browse”-button of “Firmware”.



The screenshot shows the ABB web interface. At the top left is the ABB logo. Below it, a status bar indicates 'Logged in as: abbadmin' and a 'Logout' link. A navigation menu includes 'Status', 'Event', 'Log', 'Configuration', and 'Setup' (which is underlined). Below this is a secondary menu with 'Users', 'Modbus', 'Modem', 'Regional', 'E-Mail', 'SNMP', 'Webserver', 'FTP', 'DynDNS', 'Ethernet', and 'System' (which is underlined). The main content area is divided into three sections: 'Backup Settings', 'Firmware', and 'Tools'. The 'Backup Settings' section has a 'Backup settings to local hard drive' label with a 'backup' button, and a 'Restore module from backup' label with a 'Browse...' button and a 'restore' button. The 'Firmware' section has a 'Select an update file (.nbu or .nbp)' label with a 'Browse...' button and an 'update' button. Below this is a table with three columns: 'Name', 'Version', and 'Information'. The table contains two rows: 'Kernel version' with value '1.2.24' and 'Application version' with value '3.31.6 (build 226)'. The 'Tools' section has three labels: 'Get system log files' with a 'save' button, 'Restart module' with a 'reboot' button, and 'Reset to factory default settings' with a 'reset' button. At the bottom, a footer text says 'Check for firmware updates at www.abb.com/drives'.

ABB

Logged in as: abbadmin abb Logout

Select page ▼ **Status** **Event** **Log** **Configuration** **Setup**

Users **Modbus** **Modem** **Regional** **E-Mail** **SNMP** **Webserver** **FTP** **DynDNS** **Ethernet** **System**

Backup Settings

Backup settings to local hard drive backup

Restore module from backup Browse... restore

Firmware

Select an update file (.nbu or .nbp) Browse... update

Name	Version	Information
Kernel version	1.2.24	
Application version	3.31.6 (build 226)	

Tools

Get system log files save

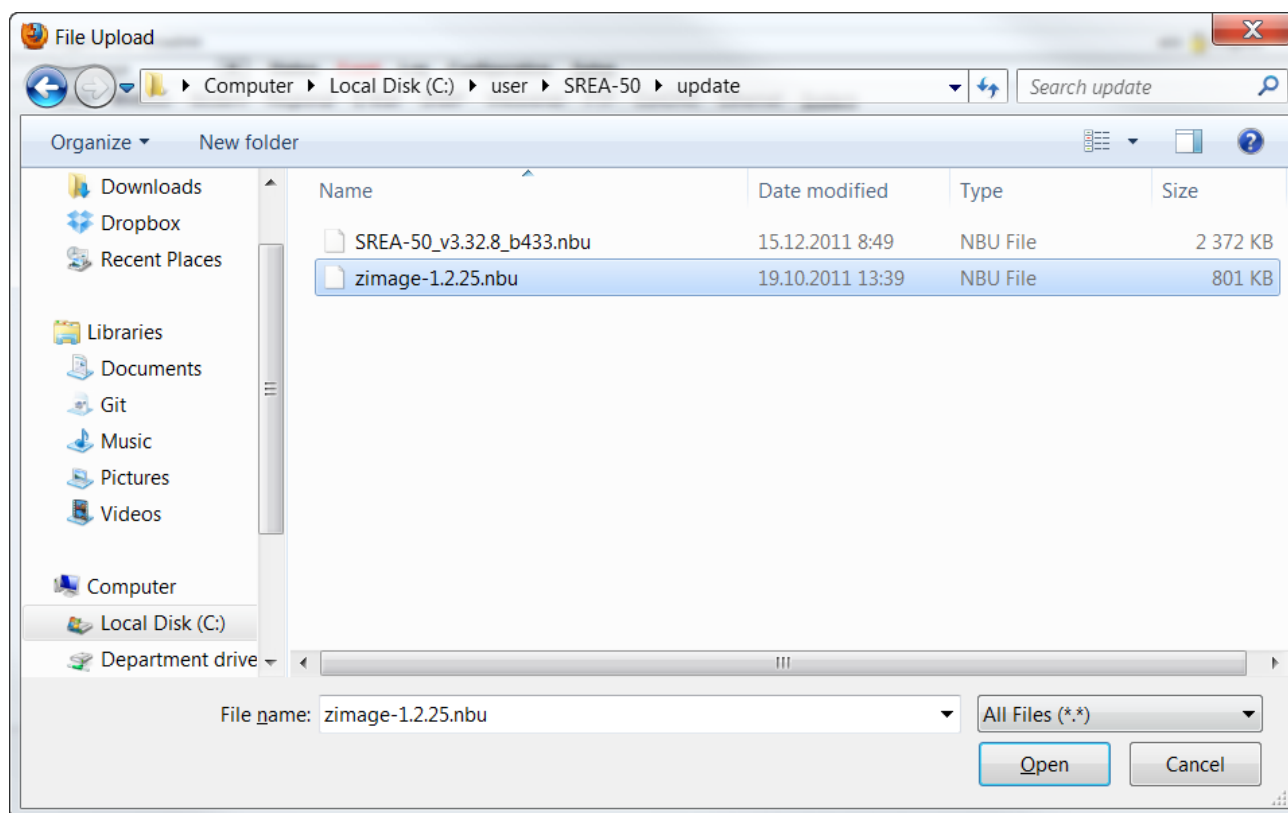
Restart module reboot

Reset to factory default settings reset

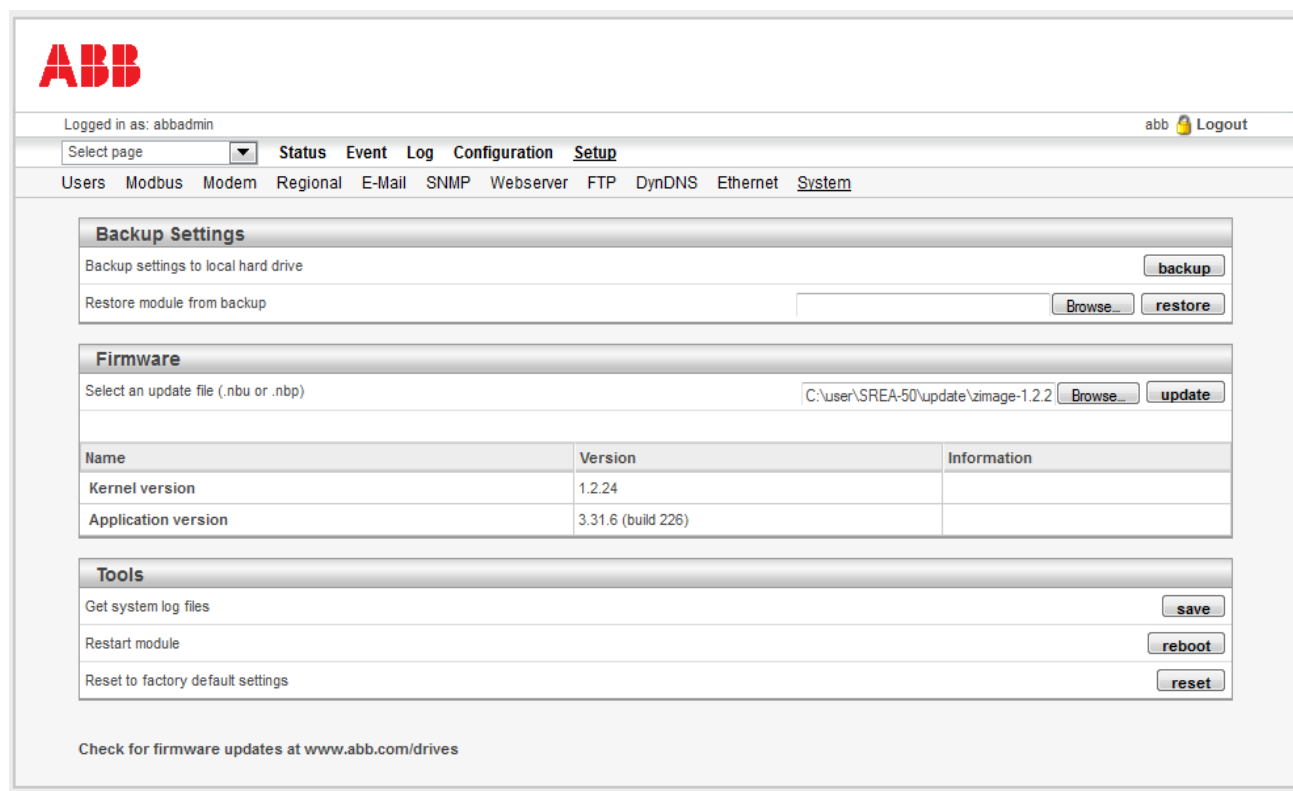
Check for firmware updates at www.abb.com/drives

Step 4

Select kernel or firmware file.

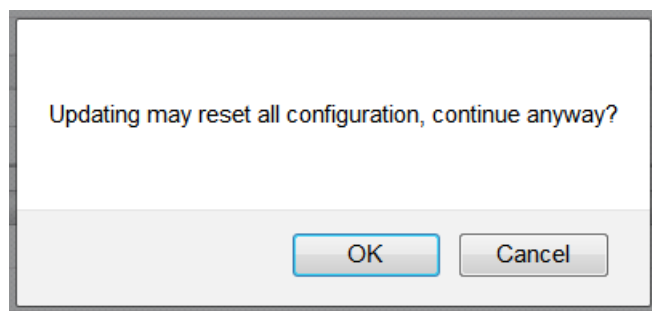


Press *Update* button of “Firmware”.



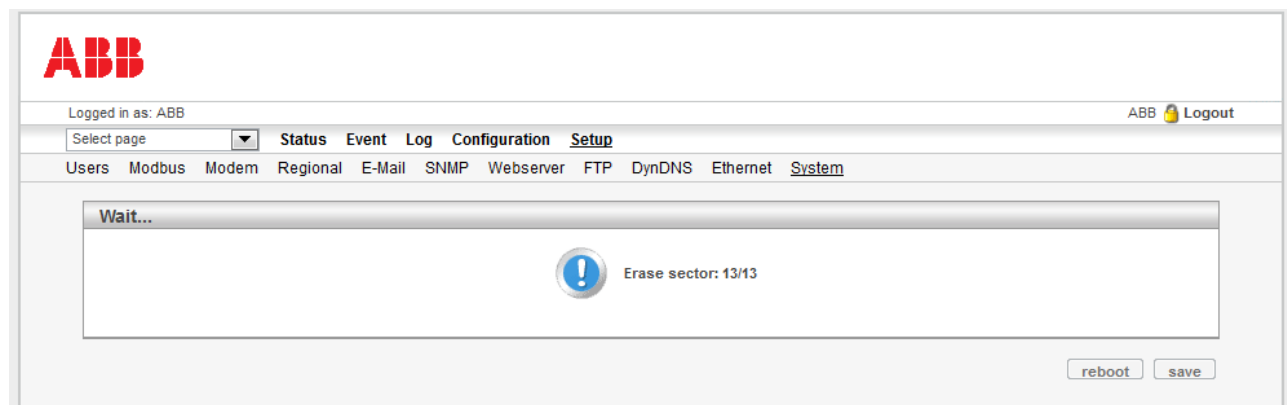
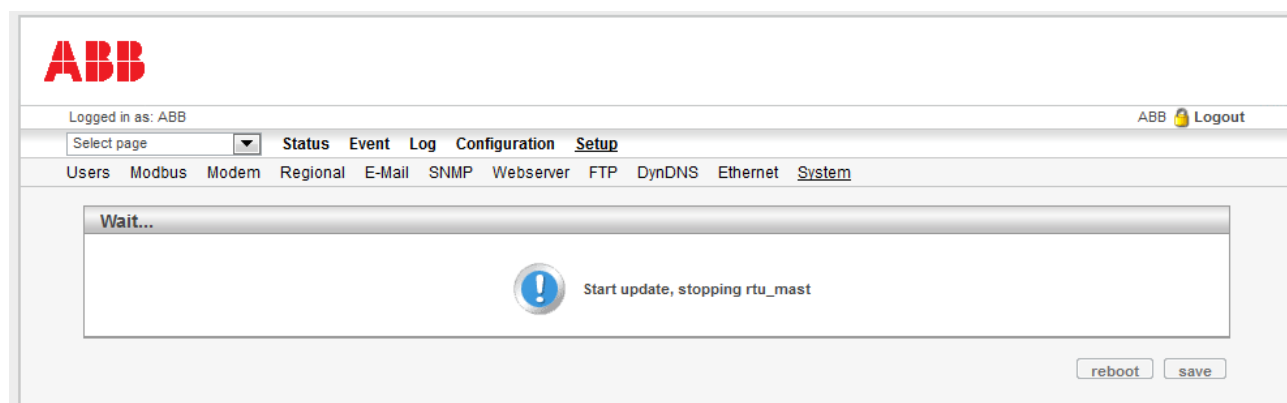
Step 5

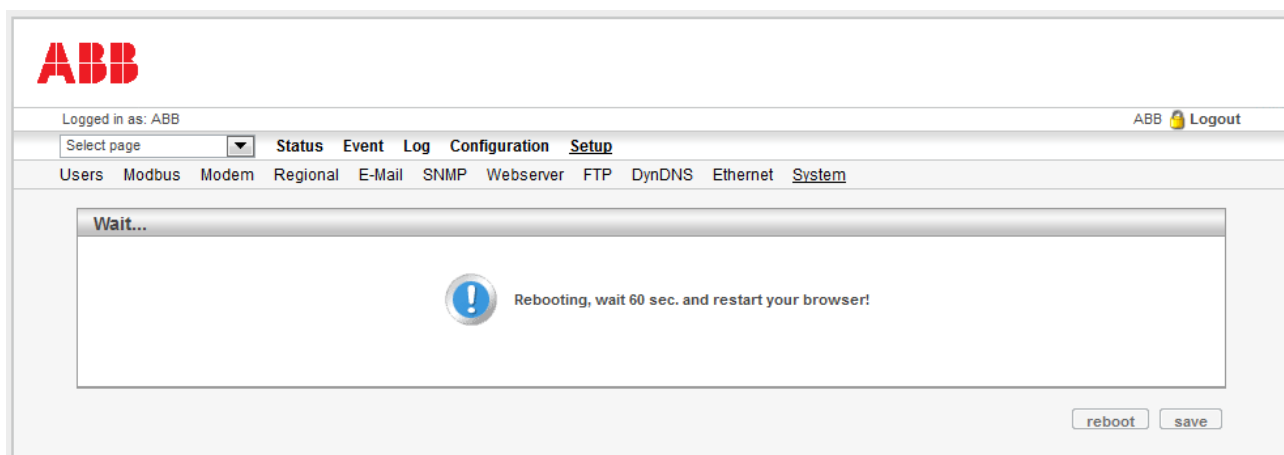
Select OK



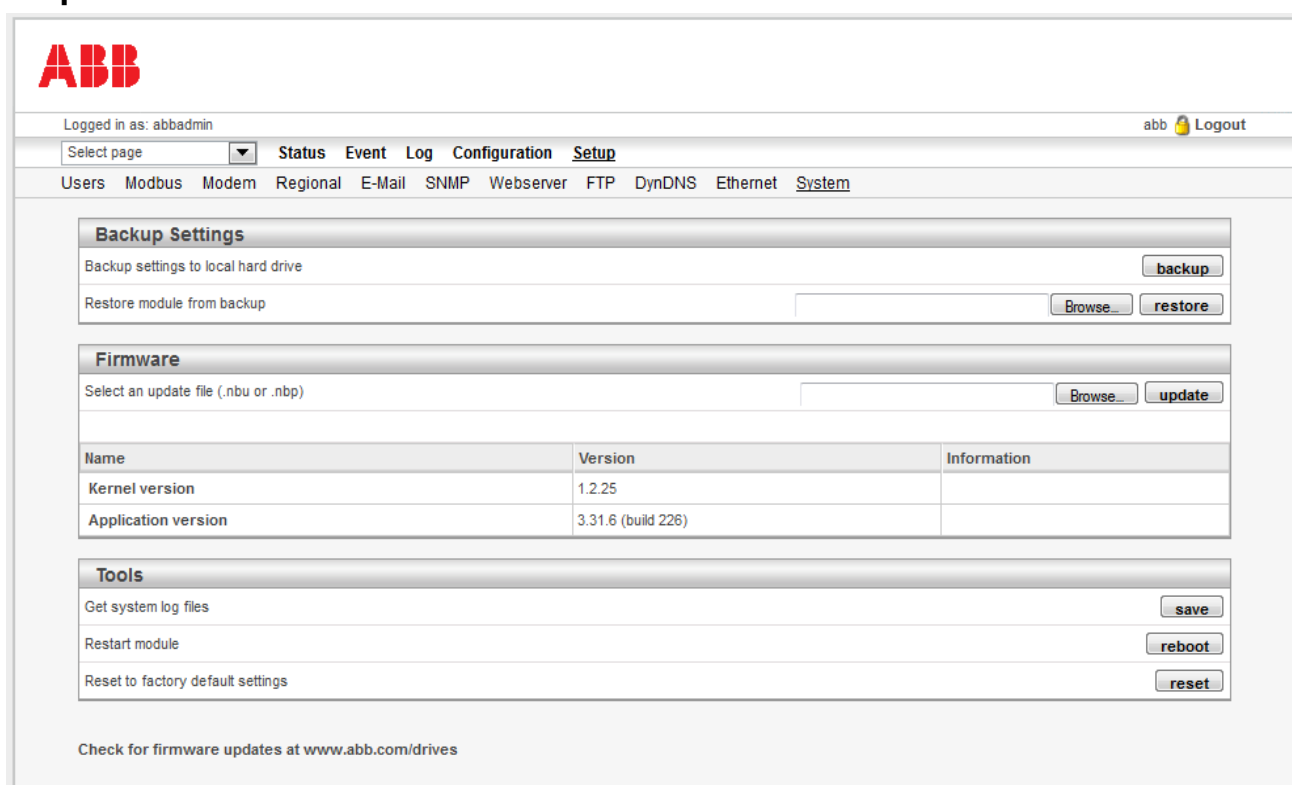
Step 6

The update process starts with erasing existing kernel or firmware. After erasing the file system, new file is uploaded to adapter automatically. Please wait until the file is uploaded.





Step 7



After succeeded upload of the file, reboot the adapter.

Step 8

Note! Kernel update **does not reset** any configuration of SREA-50 adapter.

Sign in with previously configured username and password. In case the previously configured log-in accounts are not valid, try with default username and password.

Note! First start after updating the kernel and firmware may take few minutes.

Follow steps 2-8 to update the firmware to SREA-50 or follow the steps listed in next chapter (Instructions for firmware update over local Ethernet).

Instructions for firmware update over local Ethernet

Step 1

Connect SREA-50 Ethernet adapter to a same local Ethernet with PC. Make sure that you are able to ping SREA-50 adapter from your PC.

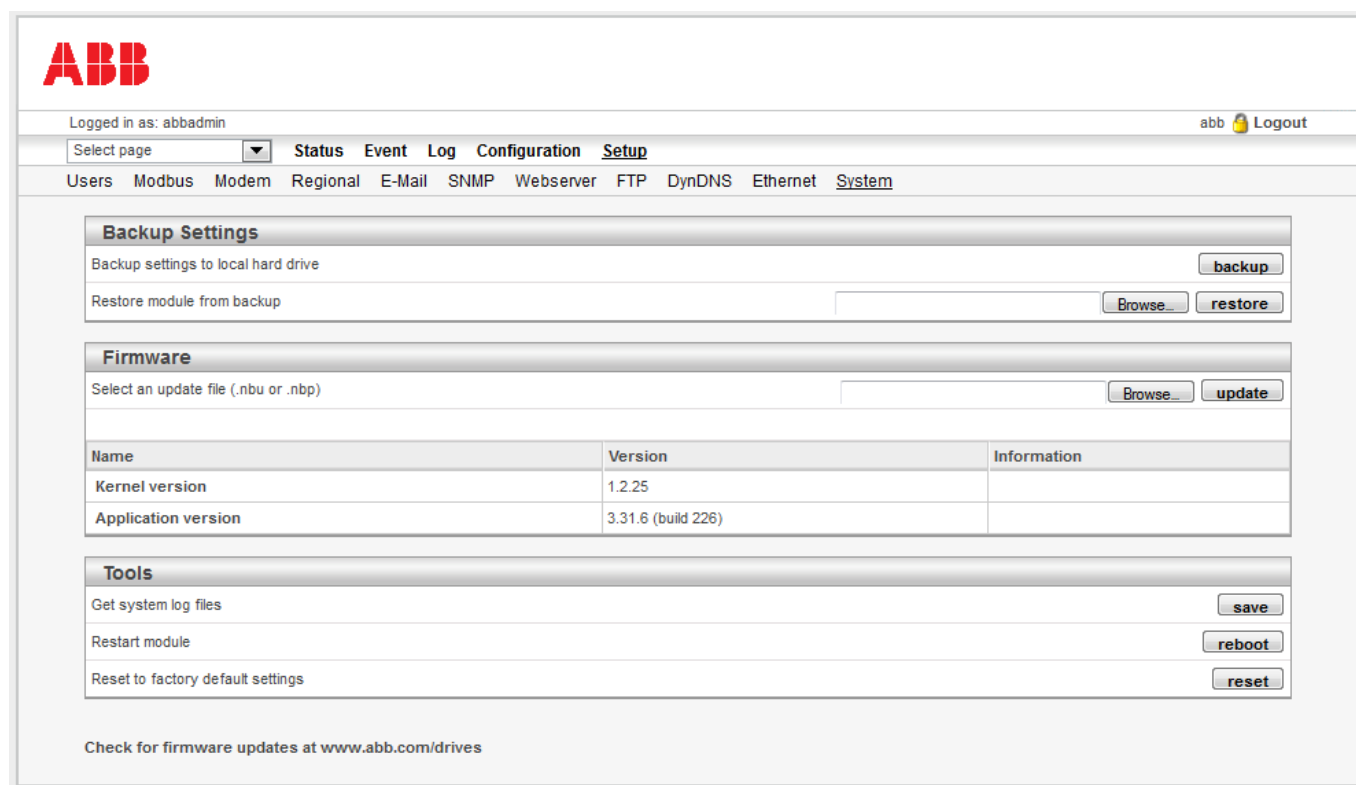
Please observe the default IP address of SREA-50 **10.200.1.1**. Firmware update will restore factory default settings to the adapter and erase previous configurations.

Step 2

Log in to SREA-50 adapter with super admin rights and select setup page.

Step 3

Open new kernel or firmware file upload dialog by “Browse”-button of “Firmware”.

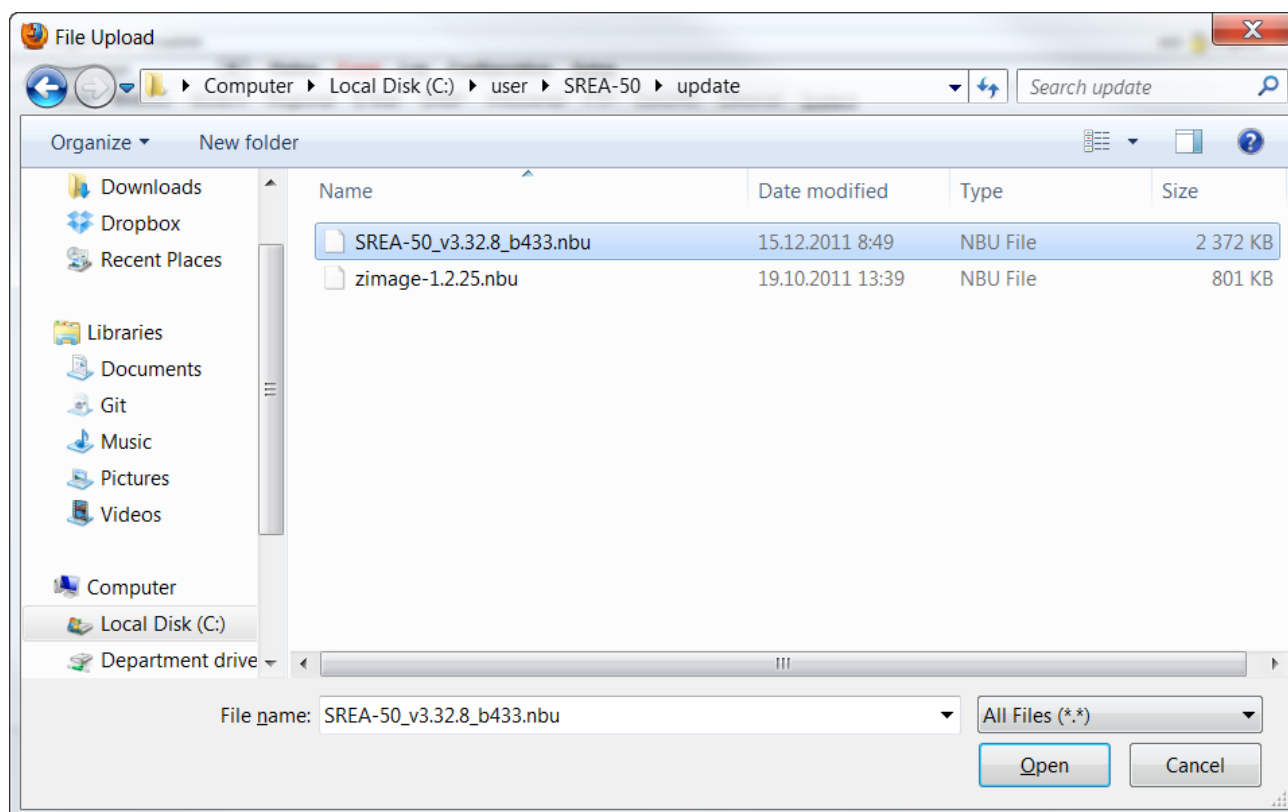


The screenshot shows the ABB SREA-50 web interface. At the top left is the ABB logo. Below it, a status bar indicates 'Logged in as: abbadmin' and a 'Logout' button. A navigation menu includes 'Status', 'Event', 'Log', 'Configuration', and 'Setup' (which is highlighted). Below the menu, a list of system components is shown: 'Users', 'Modbus', 'Modem', 'Regional', 'E-Mail', 'SNMP', 'Webserver', 'FTP', 'DynDNS', 'Ethernet', and 'System' (which is highlighted). The main content area is divided into three sections: 'Backup Settings', 'Firmware', and 'Tools'. The 'Backup Settings' section has a 'Backup settings to local hard drive' button with a 'backup' button next to it, and a 'Restore module from backup' button with a 'Browse...' button and a 'restore' button next to it. The 'Firmware' section has a 'Select an update file (.nbu or .nbp)' button with a 'Browse...' button and an 'update' button next to it. Below this is a table showing the current firmware version information. The 'Tools' section has three buttons: 'Get system log files' with a 'save' button, 'Restart module' with a 'reboot' button, and 'Reset to factory default settings' with a 'reset' button. At the bottom of the page, there is a link to 'Check for firmware updates at www.abb.com/drives'.

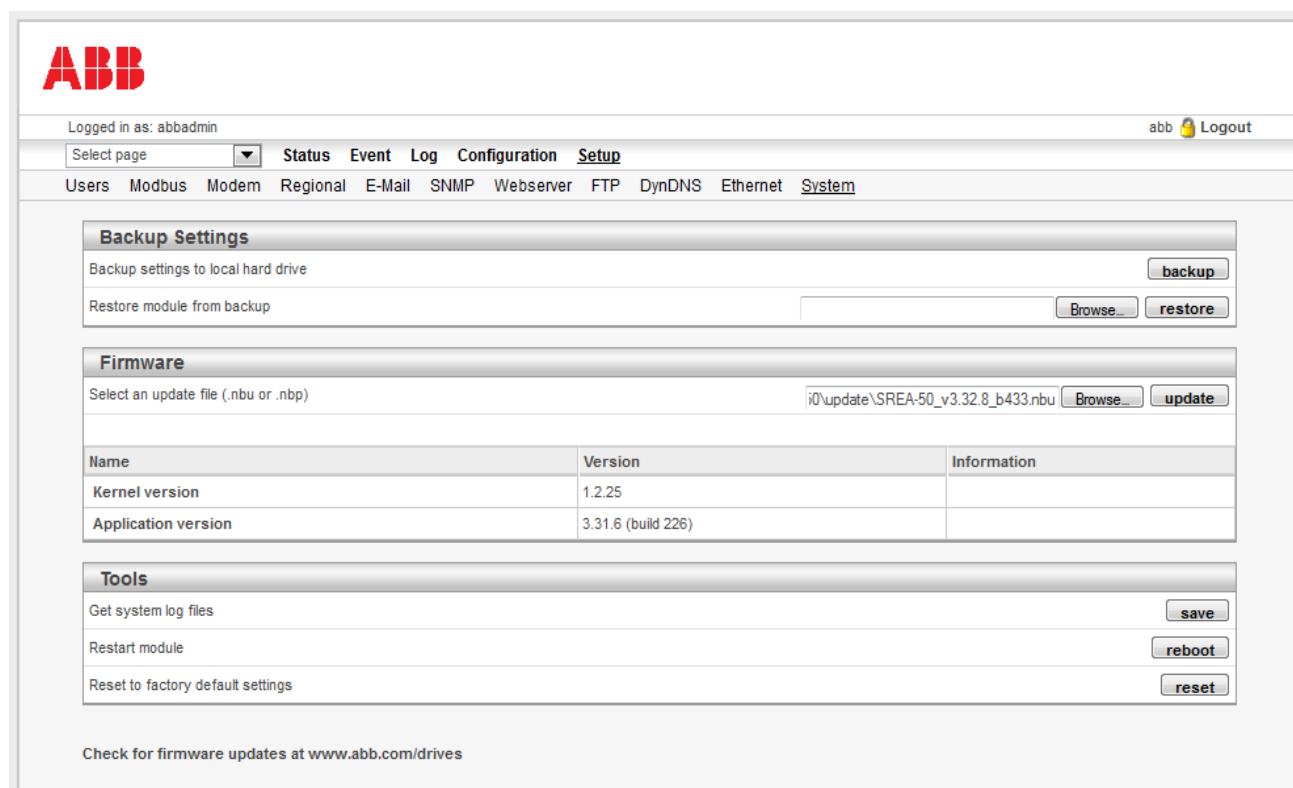
Name	Version	Information
Kernel version	1.2.25	
Application version	3.31.6 (build 226)	

Step 4

Select kernel or firmware file.

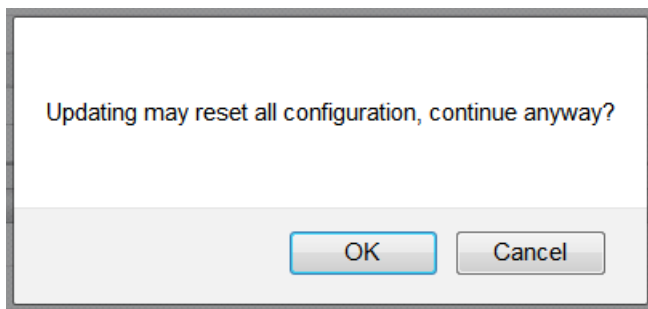


Press *Update* button of “Firmware”.



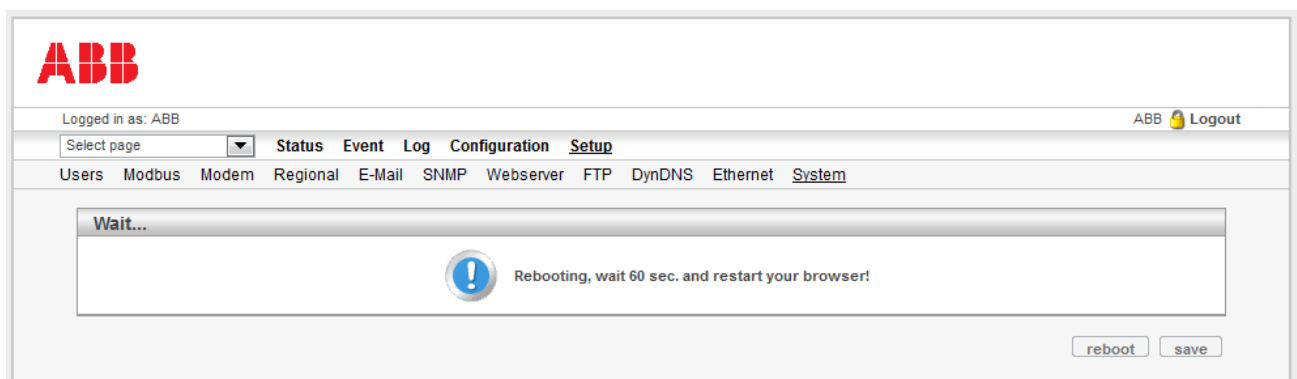
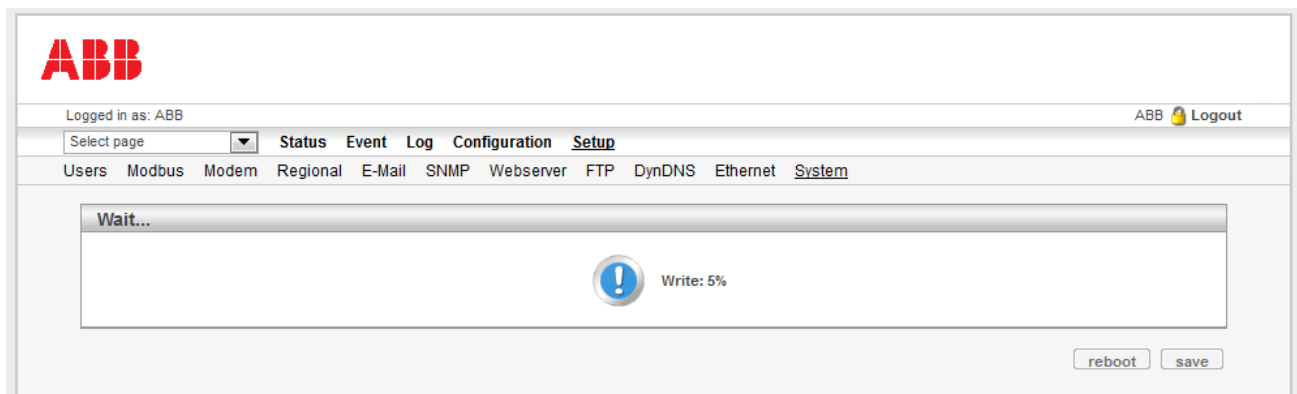
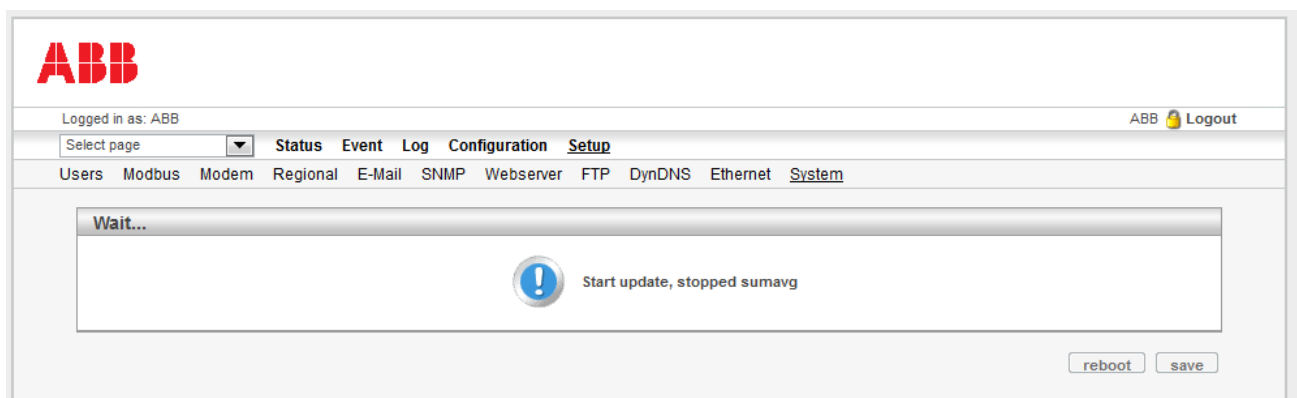
Step 5

Select OK

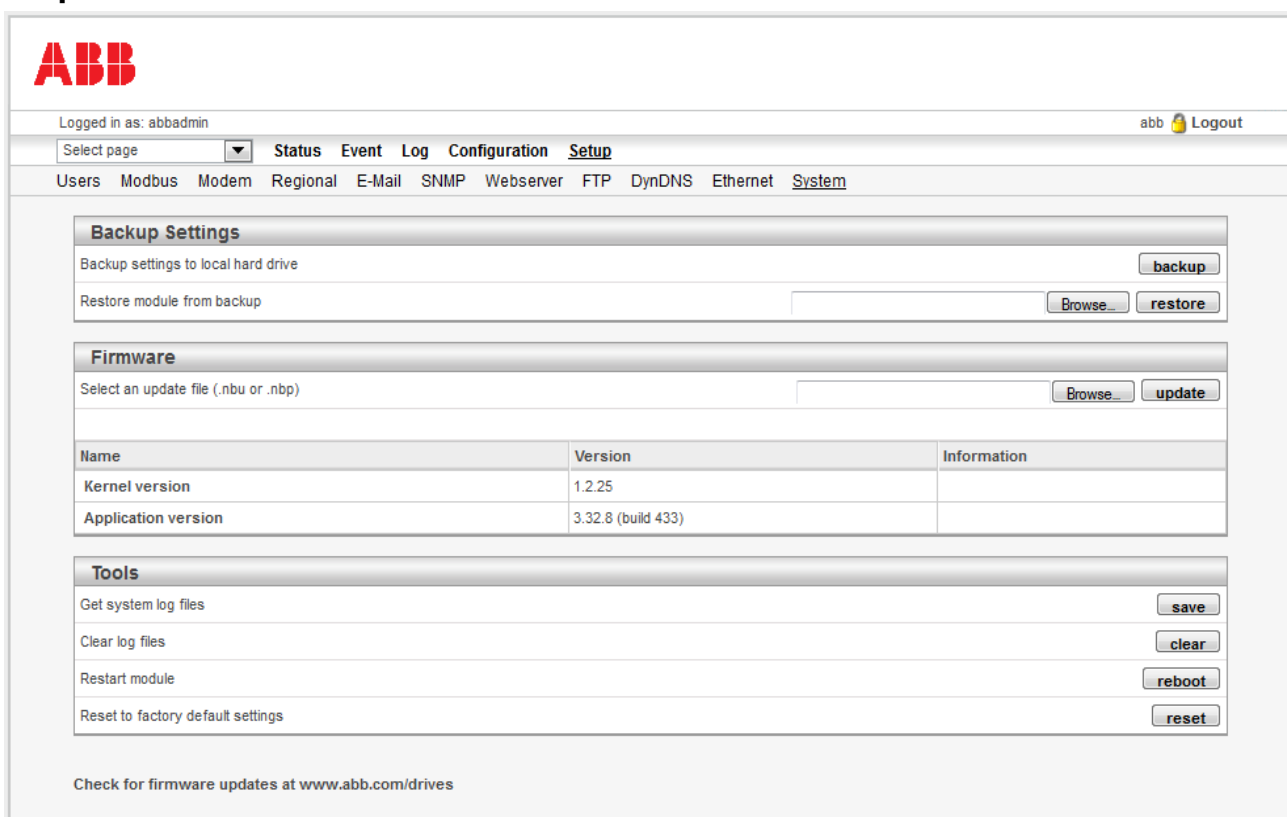


Step 6


The update process starts with verifying the new firmware file, erasing existing firmware. After erasing the file system, new file is uploaded to adapter automatically.



Step 7



ABB

Logged in as: abbadmin abb  Logout

Select page ▼ **Status** **Event** **Log** **Configuration** **Setup**

Users **Modbus** **Modem** **Regional** **E-Mail** **SNMP** **Webserver** **FTP** **DynDNS** **Ethernet** **System**

Backup Settings

Backup settings to local hard drive

Restore module from backup

Firmware

Select an update file (.nbu or .nbp)

Name	Version	Information
Kernel version	1.2.25	
Application version	3.32.8 (build 433)	

Tools

Get system log files

Clear log files

Restart module

Reset to factory default settings

Check for firmware updates at www.abb.com/drives

After succeeded upload of the file, reboot the adapter.

Step 8

Note! Usually the Ethernet settings are not cleared during firmware update.

After updating the firmware file, access the IP address of the SREA-50 (if configured) or use default IP address **10.200.1.1** and log in with factory default username.

Note! First start after updating the kernel and firmware may take few minutes.

Update with EIA-232 point-to-point connection

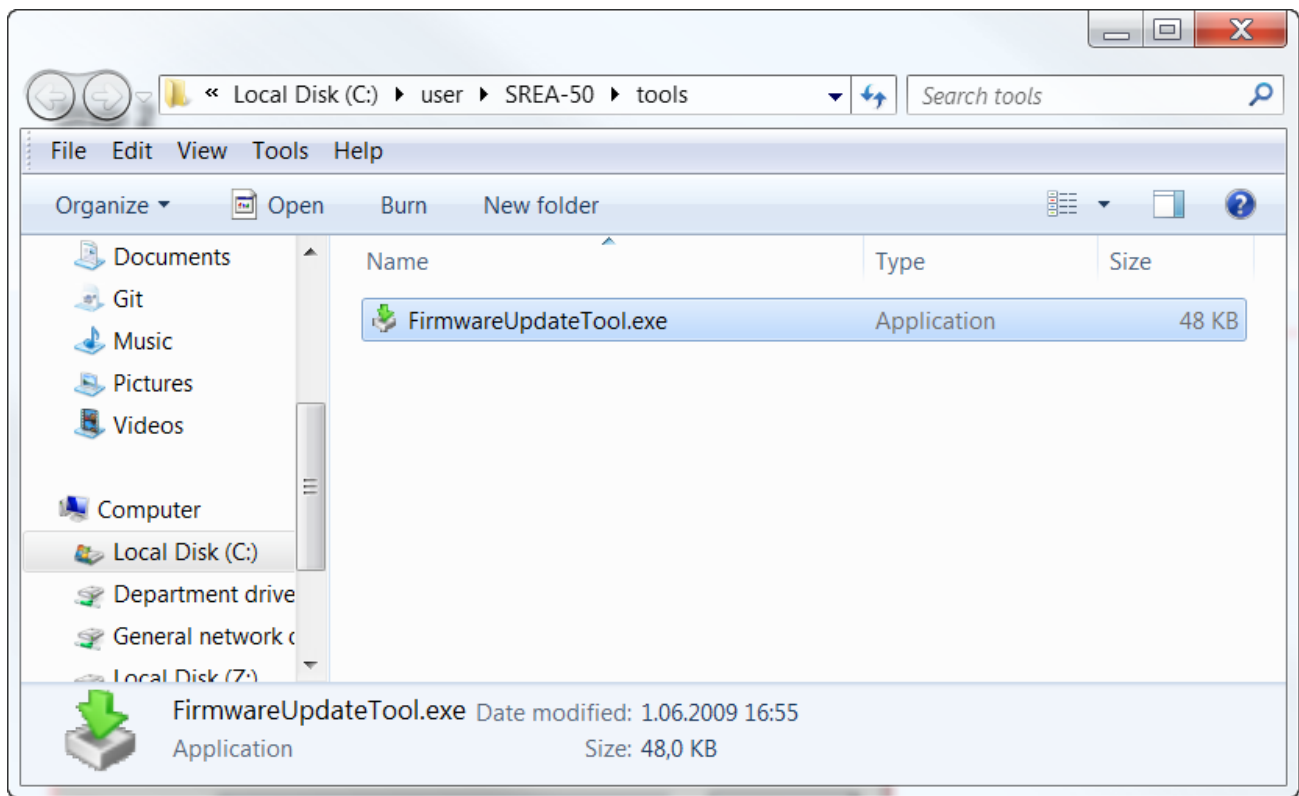
Step 1

Connect RS-232 null-modem cable between SREA-50 9-pin D-connector and PC.



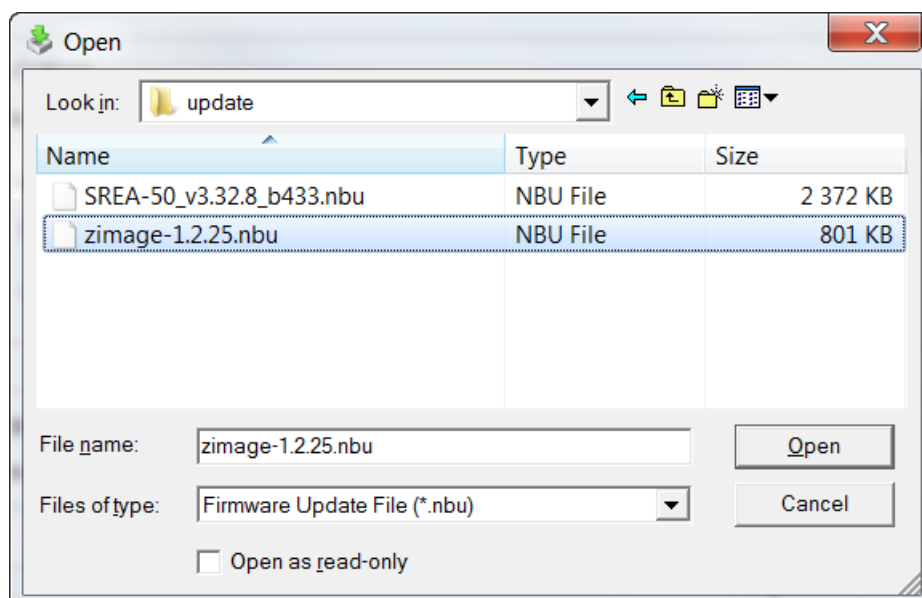
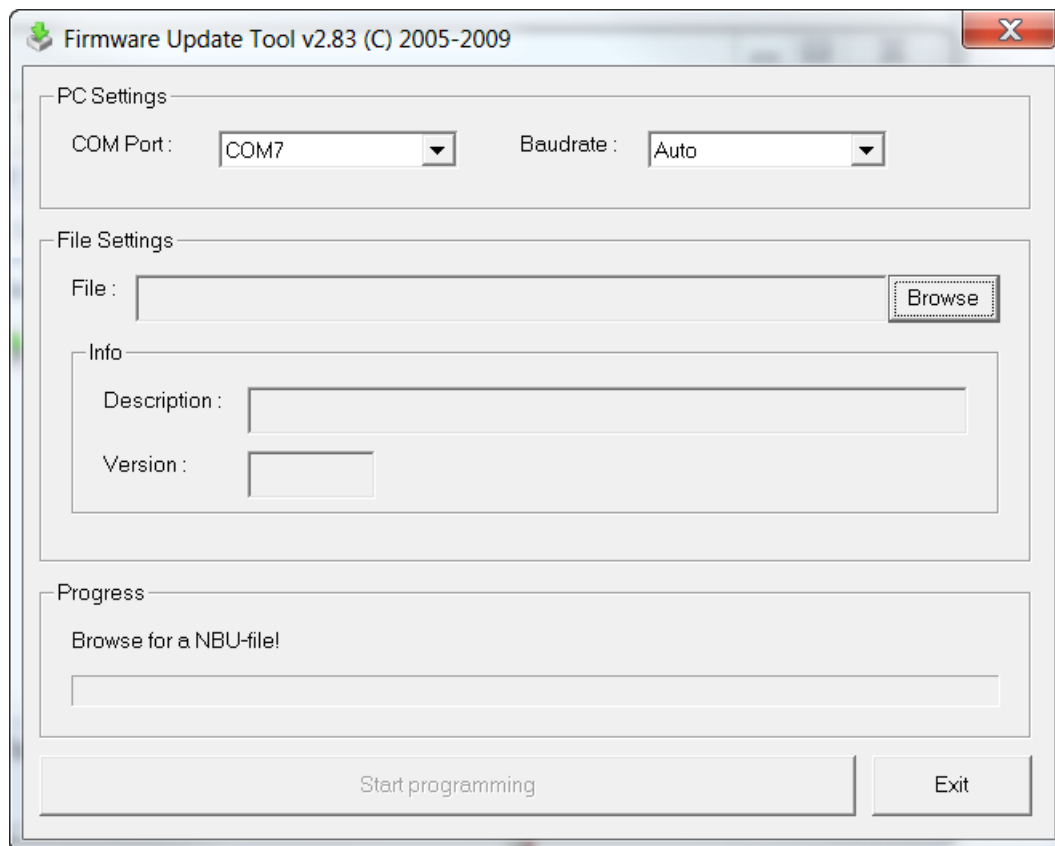
Step 2

Open firmware update tool.



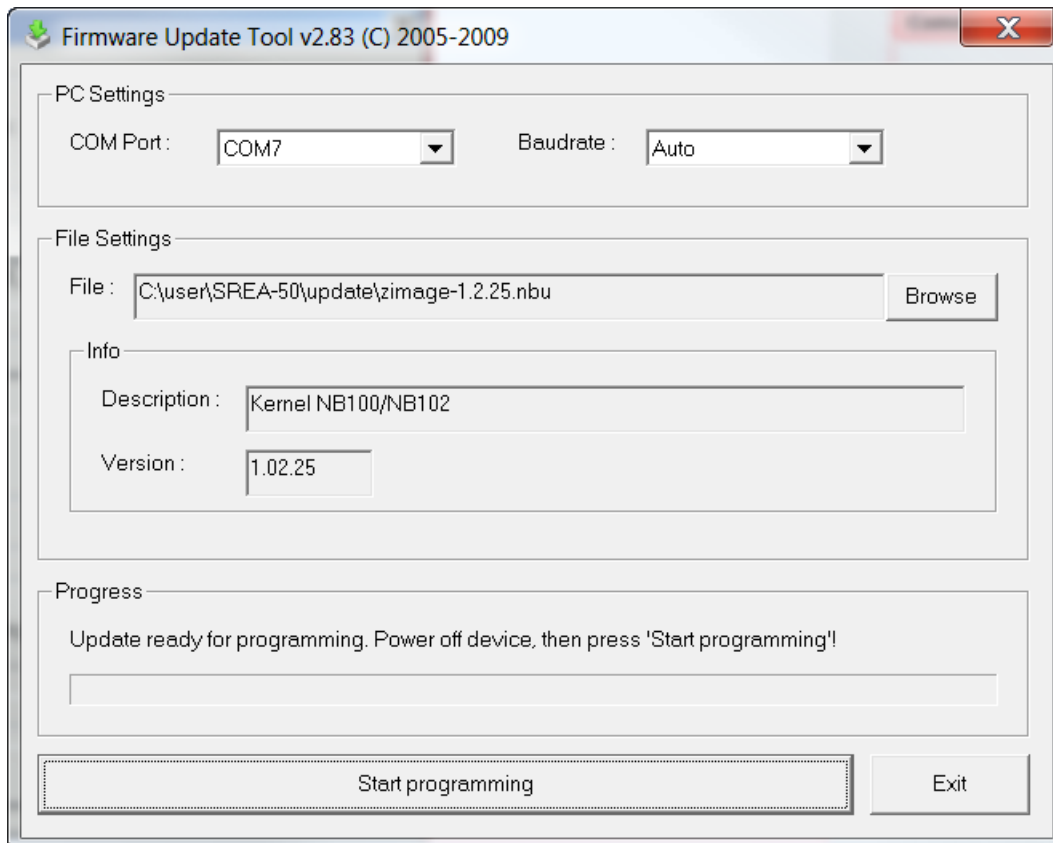
Step 3

Browse and select kernel or firmware file.



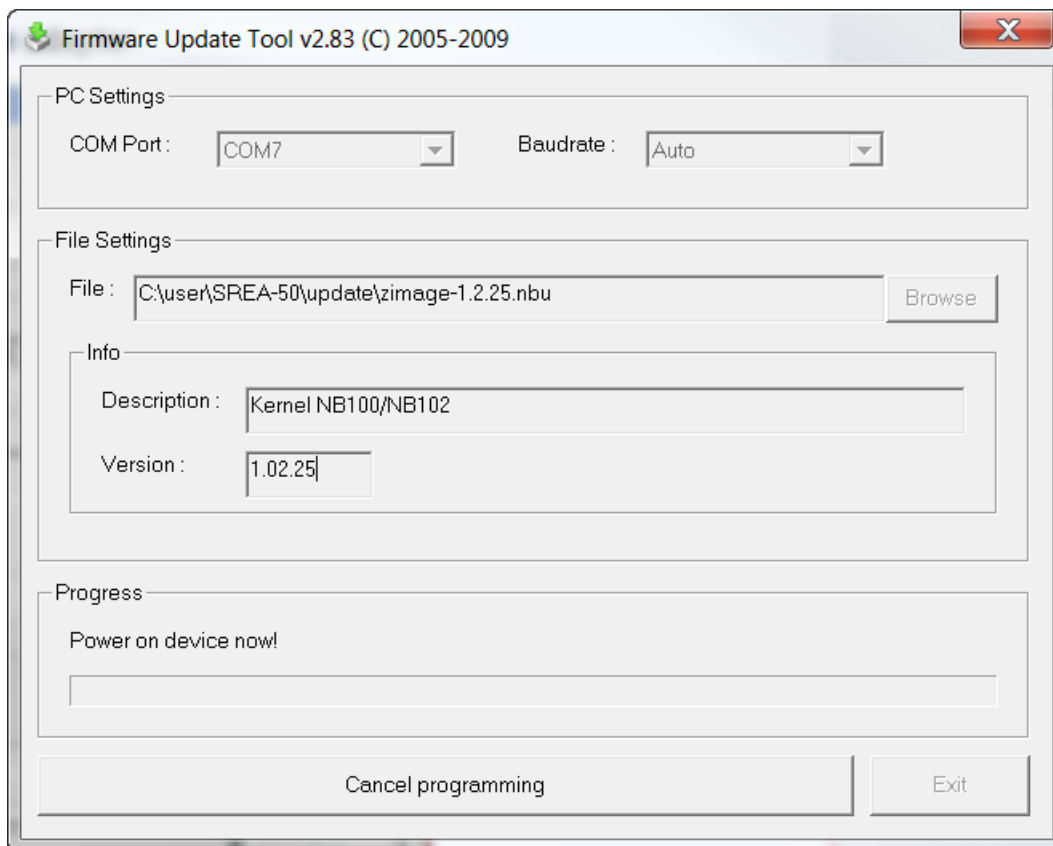
Step 4

1. Select appropriate serial port (COM Port).
2. Set **power off** the adapter.
3. Press the **Start programming** button.
4. Set **power on** the adapter.



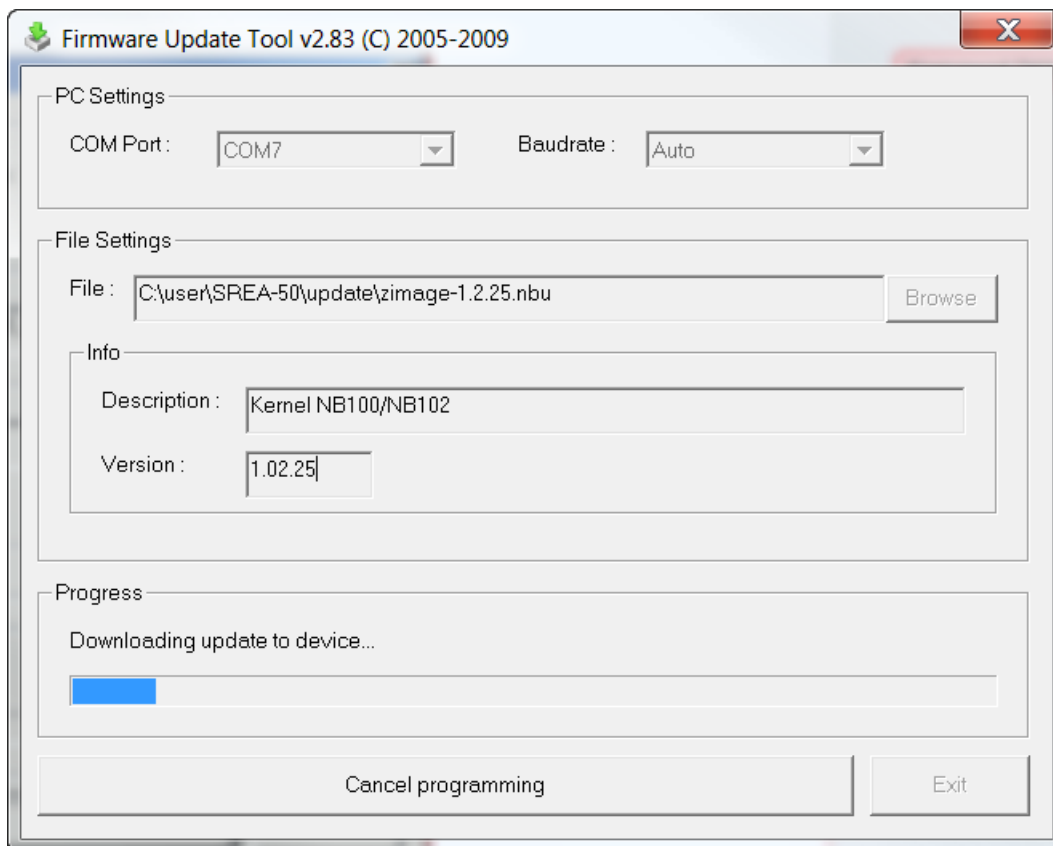
Step 5

Follow the instructions and mode on the adapter.

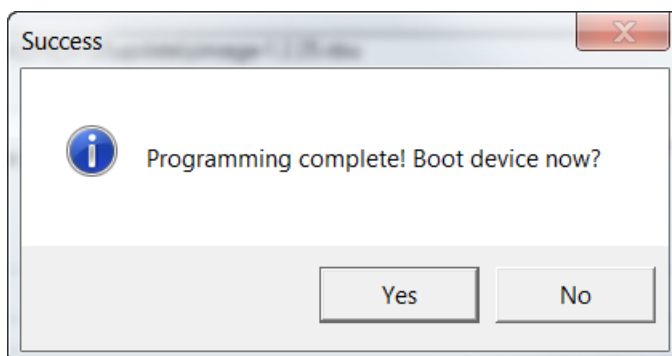


Step 6

Wait until the file is uploaded.

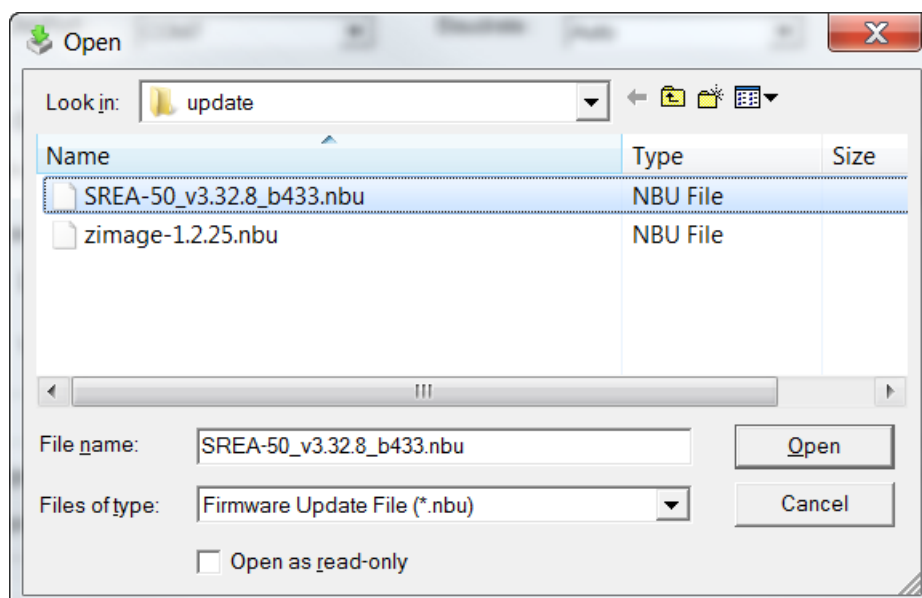
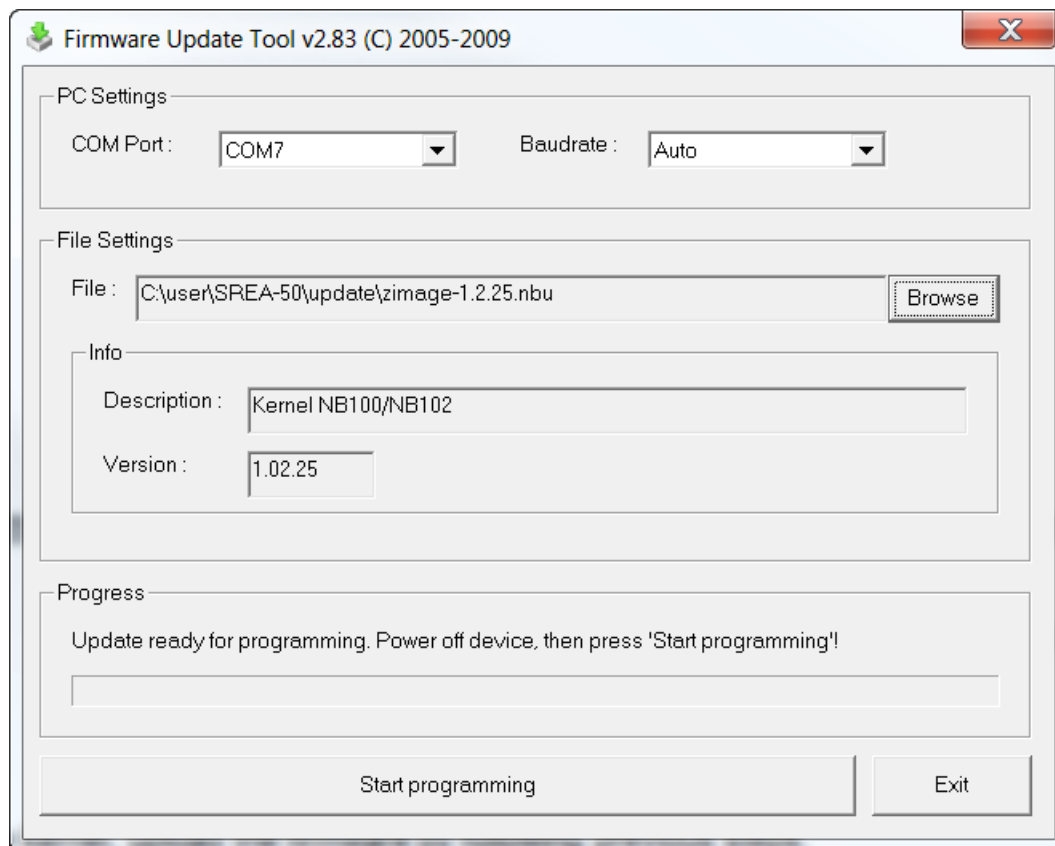
**Step 7**


After uploading reboot the adapter by pressing **Yes**.



Step 8

After updating the kernel, upload the firmware by following previous steps.



 **Firmware Update Tool v2.83 (C) 2005-2009**

PC Settings

COM Port: Baudrate:

File Settings

File:


Info

Description:

Version:

Progress

Update ready for programming. Power off device, then press 'Start programming'!

 **Firmware Update Tool v2.83 (C) 2005-2009**

PC Settings

COM Port: Baudrate:

File Settings

File:



Info

Description:

Version:

Progress

Power on device now!

 **Firmware Update Tool v2.83 (C) 2005-2009** 

PC Settings

COM Port: Baudrate:

File Settings

File:


Info


Description:


Version:

Progress

Downloading update to device...



Success 

 **Programming complete! Boot device now?**

Troubleshooting

Lost IP address

In case of lost IP address of the SREA-50, use IP configuration tool to discover IP address of the SREA-50 adapter.

Note! *Firewalls may block IP configuration tool to operate normally. Disable firewall and use IP configuration tool only in local Ethernet networks.*